




*District Scenic Highways Coordinator  
(DSHC) Workshop*

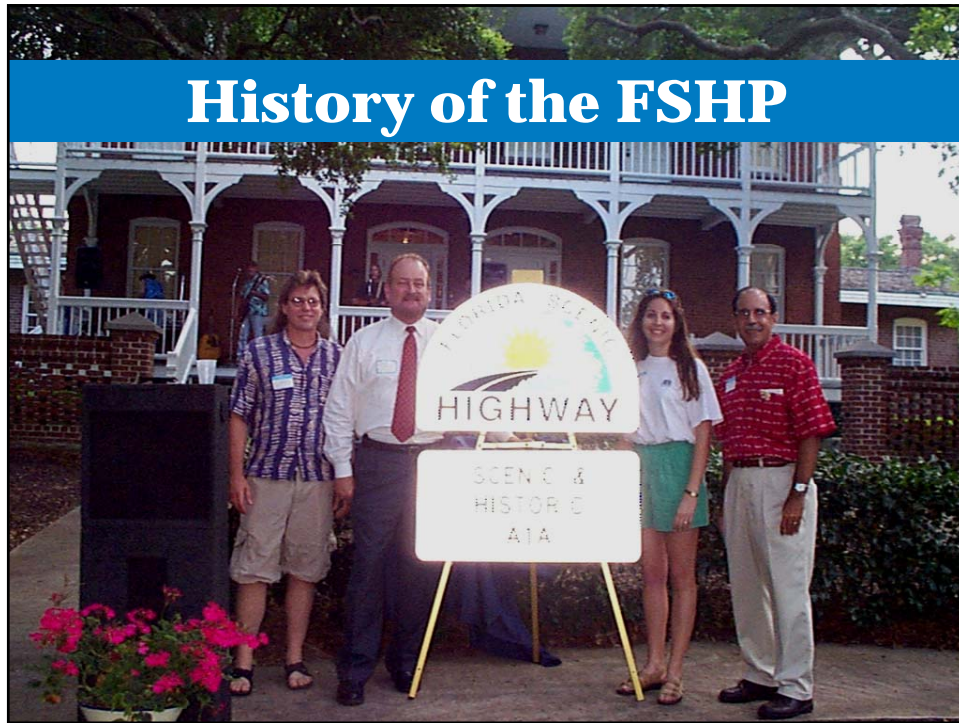
**Florida Scenic Highways Program**

*January 2011*

**Today's Agenda**

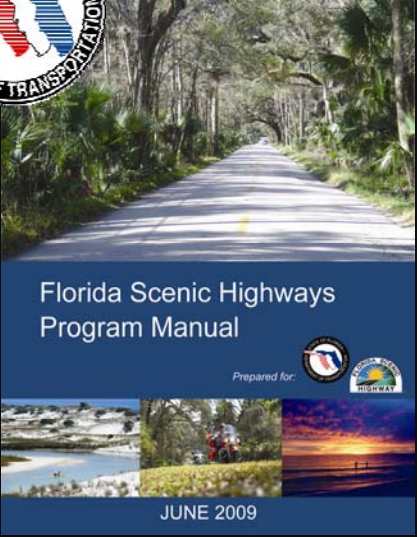


- **History of the FSHP**
- **What is a DSHC?**
- **FSHP Process**
- **FSHP Application Review**
- **NSBP Grant Reviews**
- **Current Program Status**
- **Questions and Answers**





**History of the FSHP**

- **Established in 1996**
- **Showcase and preserve outstanding resources**
- **Grassroots program**
- **Administered by FDOT Central Environmental Management (EMO) Office**



Florida Scenic Highways Program Manual

Prepared for:

JUNE 2009

## History of the FSHP



### FSHP Mission Statement

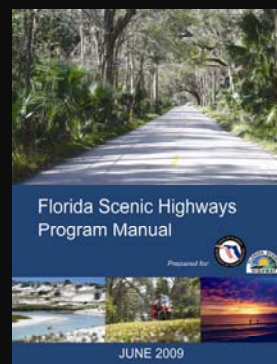
*Using a grass roots approach, heighten awareness of Florida's rich history and intrinsic resources...improve the traveler's experience...through community-based consensus and partnerships...achieve a balance of conservation, land use and transportation...while improving the community's quality of life.*

## History of the FSHP



### Program Manual

- Introduction
- Chapter 1 – Program Overview
- Chapter 2 – Eligibility Phase
- Chapter 3 – Designation Phase
- Chapter 4 – Implementation Phase
- Chapter 5 – Designation Criteria
- Chapter 6 – Intrinsic Resource Assessment
- Chapter 7 – Protection Techniques
- Chapter 8 – Funding and Promotion
- Chapter 9 – National Program
- Appendices



## History of the FSHP



### Program Manual – Role of DSHC

- **Introduction**
  - **Section I.6 – The DSHC will work closely with local citizens, governments and advocacy groups ...to assist them.....**
  - **Section I.7.1 – The State and District Scenic Highways Coordinators and FHWA will serve as the Policy and Procedures Review Committee for updating the FSHP Manual.**
- **Chapter 1**
  - **Section 1.9 – The DSHC is the person who has been appointed to implement the FSHP within their District.**

## History of the FSHP



### Program Manual – Role of DSHC (cont'd)

- **Chapter 2**
  - **Section 2.3 – The DSHC can provide introductory information...about the initial steps to be taken.....**
  - **Sections 2.6, 2.7, and 2.8 – Letter of Intent, Requesting a Program Manual, and Meetings and Training**
  - **Sections 2.25 and 2.26 – Submit a Preliminary Eligibility Application, Submit the Final Eligibility Application**
- **Chapter 3**
  - **Section 3.2 – A Preliminary Designation Application is prepared...for submission to the DSHC.....**
  - **Section 3.13 – The DSHC may be able to assist the CAG in developing and implementing their CPP.....**

## History of the FSHP



### Program Manual – Role of DSHC (cont'd)

- **Chapter 3 (cont'd)**
  - **Sections 3.21, 3.22, and 3.23 – Submit a Preliminary Designation Application, Submit the Final Designation Application, and Dedication Ceremony**
- **Chapter 4**
  - **Sections 4.4.1 and 4.4.2 – Annual Reports and Five-Year CMP Update**
- **Chapter 6**
  - **Section 6.8.1 – Before beginning, the CAG should discuss their Corridor Video efforts with their DSHC.**
- **Chapter 8**
  - **Section 8.8.1 – Federal Level Funding Opportunities**

## History of the FSHP



### Program Manual – Role of DSHC (cont'd)

- **Appendices**
  - **Appendix B – Applications and Forms**
  - **Appendix D – Technical Support**
  - **Appendix E – National Program, FHWA Interim Federal Policy – This established the National Scenic Byways Program in 1995 and outlines all federal information about byways including designation, intrinsic qualities (definitions), and corridor management plans.**
  - **Appendix F – Administrative Rule for the Florida Department of Transportation's Florida Scenic Highways Program Manual**

## What is a DSHC?



## What is a DSHC?



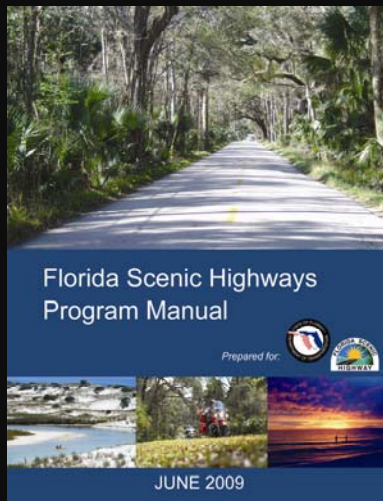
- **District Scenic Highways Coordinator (DSHC)**
  - **The DSHC is the person who has been appointed to implement the FSHP within their District.**
  - **The DSHC answers questions and assists applicants in the designation process.**
  - **The DSHC should be readily available to assist any groups with questions or problems they may have.**

## What is a DSHC?



### Purpose

- Advise the CAG/CME on direction of the FSHP
- Utilize your knowledge
- Make recommendations on guidelines and expectations based on the Program Manual
- Advise on direction for potential and current corridors
- Provide guidance and advise on applications
- Advise on NSBP grant applications



## What is a DSHC?



### Role as Reviewers

- Applications
  - Provide feedback and direction
  - Advise on corridor designations
- NSB Grants
  - Assist CME's with writing grant applications
  - Provide guidance and advise on grant applications




## Why is this important?

**What is a DSHC?**

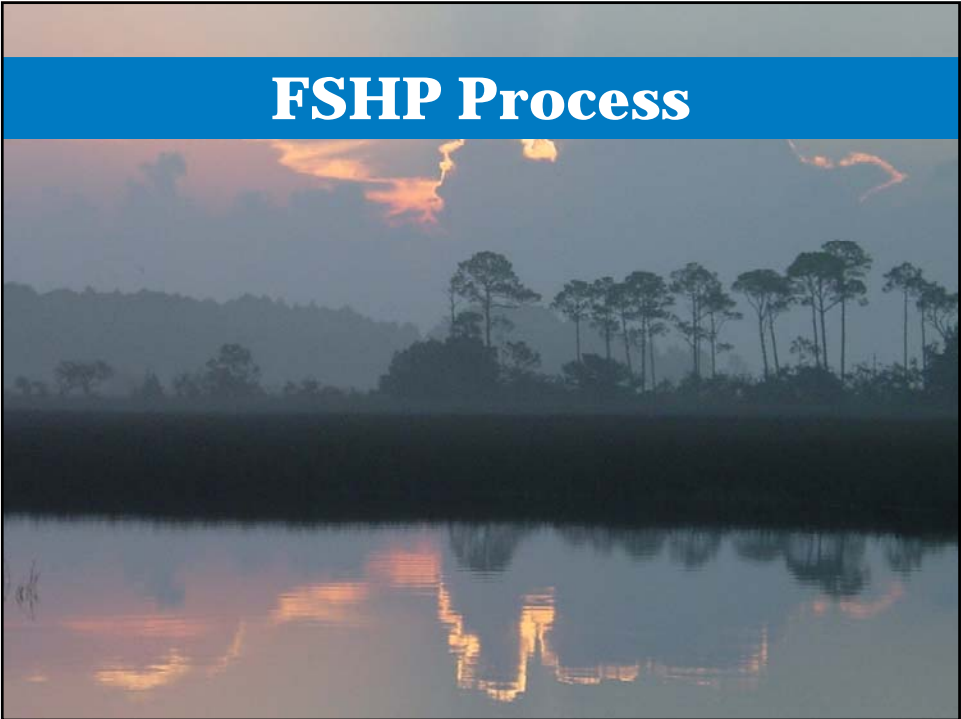
**Role as Advisers**

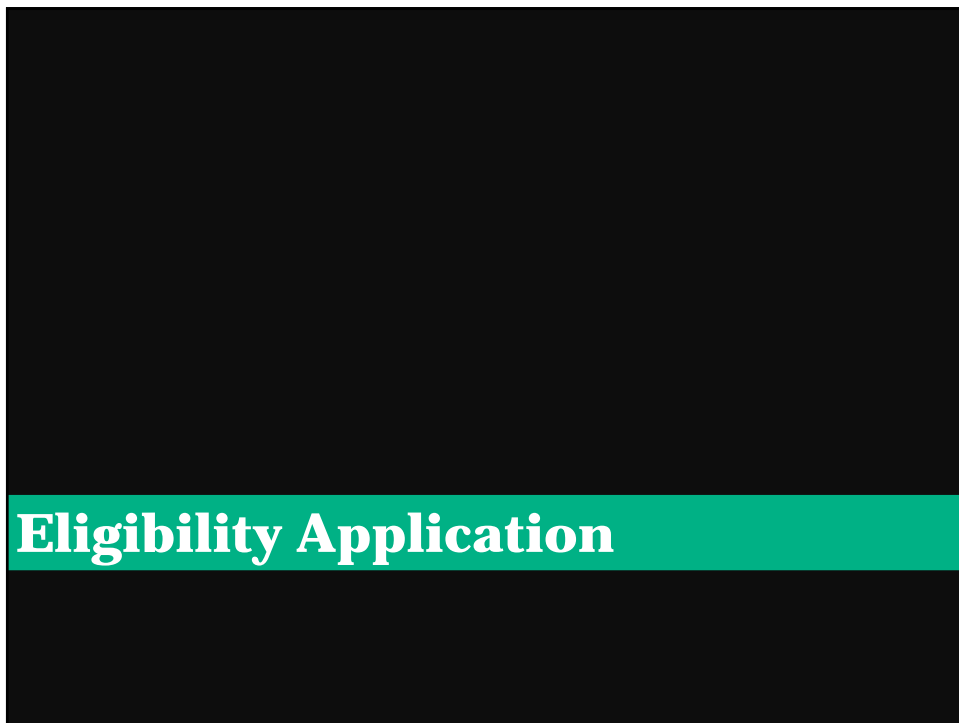
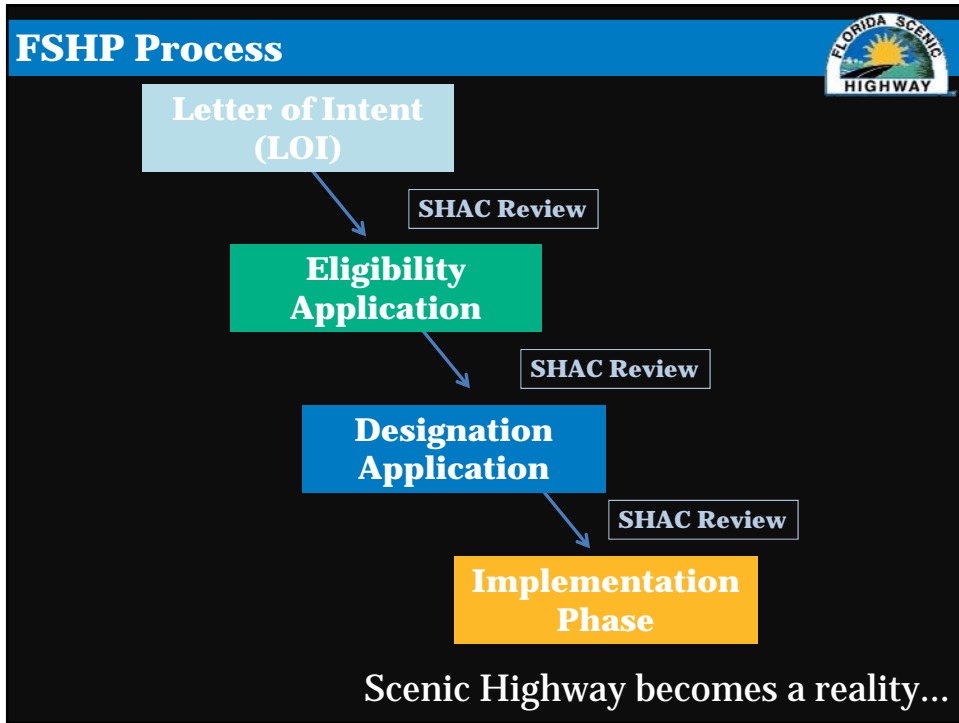
- Recommend changes to the program process & procedure
- Recommend updates to the Program Manual
- Provide ongoing technical assistance to CAG/CME groups using the processes outlined in the FSHP Manual

**Why is this important?**



The image shows a stack of three highway signs. The top sign is a circular emblem with a sun and the text 'FLORIDA SCENIC HIGHWAY'. The middle sign is rectangular and reads 'SUNCOAST PARKWAY'. The bottom sign is a shield-shaped sign with a green top section that says 'TOLL' and a white bottom section with the number '589' and a map of Florida.





## FSHP Process

### Letter of Intent



- The DSHC provides introductory info. and initial steps to potential applicants
- First submittal to District Scenic Highway Coordinator (DSHC)
- Define corridor classification – Scenic or Heritage
- Preliminary information
- Statement of significance



## FSHP Process

### Letter of Intent



### FSHP Corridor Classification

- SCENIC corridors – meet FSHP criteria for intrinsic resources that are: Natural, Recreational, or Scenic
- HERITAGE corridors – meet FSHP criteria for intrinsic resources that are: Historical, Archeological, or Cultural



## FSHP Process

### Eligibility Application



#### What does the CAG do during Eligibility?

- Letter of Intent
- Prepare Eligibility Application
  - Background Assessment (12 areas)
  - Intrinsic Resource Assessment (6 steps)
  - Criteria Assessment: Universal Criteria (10) and Resource-specific Criteria
  - Corridor Vision & Goals
  - Other Areas



### Discussion

## FSHP Process

### Eligibility Application



#### DSHC Role

- Using the Program Manual, review the Eligibility Application and provide revisions/corrections to the CAG
- Examples



### Discussion

**FSHP Process** **Eligibility Application** 

1. Organize a CAG
2. Submit Letter of Intent (LOI)
3. SHAC "tour" (if desired)
4. Submit Eligibility Application to DSHC
5. Submit to FDOT & Consultant staff
6. CAG revisions
7. Submit to SHAC for review & vote (SHAC meeting)

  
THE FLORIDA BLACK BEAR SCENIC BYWAY  
  
Silver Springs to Ormond Beach  
  


## Designation Application

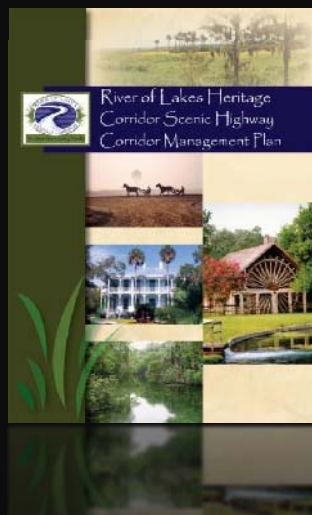
**FSHP Process**

**Designation Application**



**What does CAG/CME do during Designation?**

- **CMP development**
- **Background conditions analysis**
- **Intrinsic resource assessment & designation criteria**



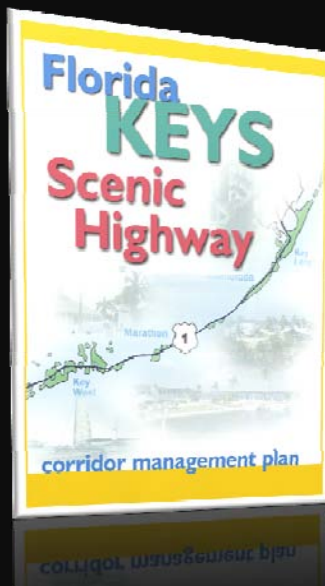
**FSHP Process**

**Designation Application**



**CME Role**

- **Revise/enhance areas of the Eligibility Application**
- **Prepare and submit Designation Application or the Corridor Management Plan (CMP) to DSHC for review**



## FSHP Process

### Designation Application



#### DSHC Role

- **Provide technical assistance during CMP/Designation Application development**
- **Submit Designation Application to State Coordinator for review**
- **Process inter-departmental reviews**
- **Assist CAG/CME with Community Participation Program**



#### Discussion

## FSHP Process

### Designation Application



#### Review Process

1. **Preliminary Designation Application/CMP submitted to DSHC for review**
2. **FDOT & consultant staff review**
3. **CAG revisions**
4. **Final Designation Application & CMP submitted to SHAC**
5. **SHAC review and vote (SHAC meeting)**
6. **Secretary letter is sent out**



**FSHP Process**

**Designation Application**



# DESIGNATION AS A FLORIDA SCENIC HIGHWAY!



**At the Suncoast Scenic Parkway designation ceremony in 2007**

**Implementation Phase**

**FSHP Process**

**Implementation Phase**



**What does the DSHC do to help CME's with Implementation?**

- Develop/implement sign plans
- Help the CME implement the CMP Action Plan
- Help the CME monitor resources & corridor activities
- Provide ongoing technical assistance and guidance
- Participate in monthly CME Meetings
- Participate in events



**Discussion**

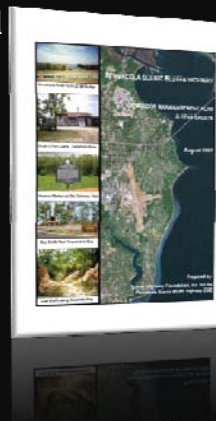
**FSHP Process**

**Implementation Phase**



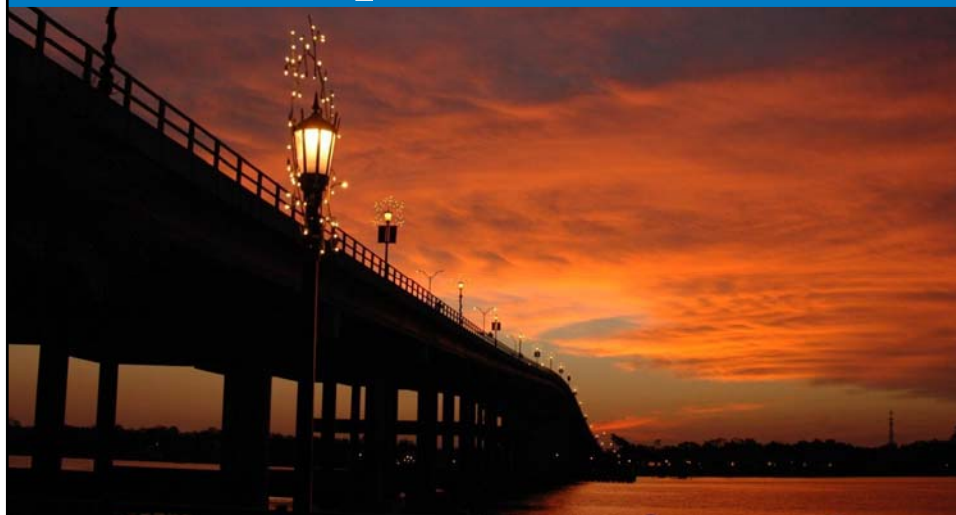
**DSHC Role (cont'd)**

- Assist and provide guidance on promotion of highways
- Help the CME prepare/review the Annual Reports
- Reviews and submits 5-Year CMP update to the State Coordinator



**Discussion**

## Ongoing Duties and Responsibilities



### Ongoing Duties and Responsibilities



- Assist groups with questions or problems they have regarding the FSHP
- Work closely with citizens to assist them with procedural requirements
- Act as a liaison between the groups and the State Coordinator or SHAC
- Participate in quarterly FSHP teleconferences to provide updates on the designated highways in their district
- Provides Scenic Highway Evaluations for FDOT projects located on designated corridors



## Ongoing Duties and Responsibilities



### Annual Reports

- **Monitors progress of the CME in meeting CMP goals**
- **Provides guidance to CMEs in preparation of Annual Reports**
- **Makes sure Annual Reports are submitted to the State Coordinator**



## Ongoing Duties and Responsibilities



### 5-Year CMP Updates

- **Why CME's do these?**
- **DSHC Helps and Reviews**
- **SHAC reviews (no formal meeting needed)**
- **CME addresses comments in future CMP updates**




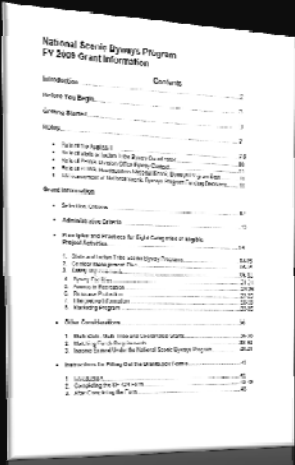


## Grants

### Duties

- **Assist with identifying grant projects for groups**
- **Provide technical review of grant applications**
- **Reviews and processes annual FHWA NSB Grant applications**
- **Provide info and guidance to CMEs regarding other grant programs**





## Grants



### Duties (cont'd)

- **Once grants are awarded, the DSHC coordinates with the FDOT Local Agency Program (LAP) Administrator, Joint Project Agreement (JPA), or other coordinators to help execute agreements for funds**
- **Provides technical assistance and guidance to CAG/CMEs for meeting NEPA documentation requirements of grant projects**

## FSHP Process



### Critique of Current FSHP Process

- **Evaluation sheets**
- **Meeting documents**
- **Universal criteria**
- **What works/doesn't work?**
- **Do you need anything?**



## Discussion

## Important Resources



### FSHP Websites

#### EMO Website

[www.dot.state.fl.us/emo/](http://www.dot.state.fl.us/emo/)

#### Tourist Website

<http://www.floridascenichighways.com/>

#### Program Website

<http://www.floridascenichighways.com/program/>

- Resources Tab

## Important Resources and Contact Info



**Mariano Berrios**

(850) 414-5250 or [mariano.berrios@dot.state.fl.us](mailto:mariano.berrios@dot.state.fl.us)



**Lynne Marie Whately, AICP**

(407) 875-8930 or [lmwhately@transystems.com](mailto:lmwhately@transystems.com)

**Andy Nicol, AICP**

(407) 875-8926 or [awnicol@transystems.com](mailto:awnicol@transystems.com)



**Clint Eliason**

(407) 875-8932 or [ccliason@transystems.com](mailto:ccliason@transystems.com)

**QUESTIONS?**



**THANK YOU!**