

INSTALLATION INSTRUCTIONS – FLORIDA SCENIC HIGHWAYS PROGRAM GPS ITINERARIES For TomTom Users

Ollie and his friends say....Navigating Florida’s Scenic Highways is easy as 1-2-3!!!



Ollie



Fernando



Penny



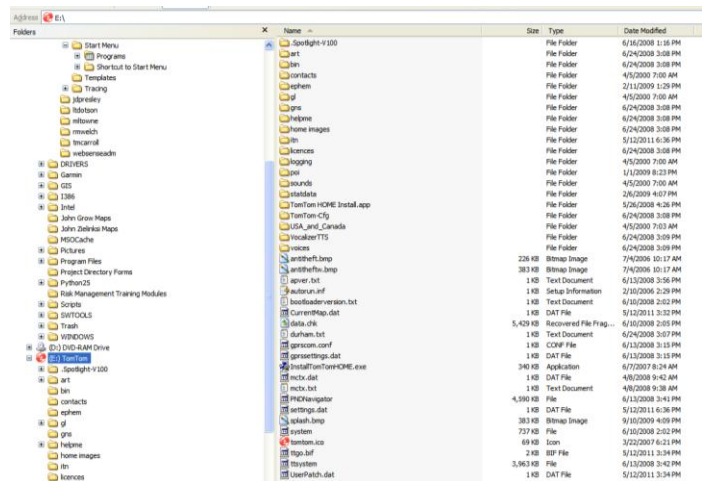
Augustine

Step 1: Download the FSHP GPS Resource Itineraries – TomTom.zip file from the Florida Scenic Highways Program at www.floridascenichighways.com and save the .zip file to your computer.

Step 2: Unzip the .zip file and extract the Florida Scenic Highways – Routes.itn and FSHP GPS Point Resource Itineraries.ov2 in a separate folder on your computer for easy accessibility.

Name	Type	Package...	Has ...	Size	R...	Date
Florida Scenic Highways - Routes.itn	ITN File	71 KB	No	265 KB	74%	5/12/2011 9:29 AM
FSHP GPS Point Resource Itineraries - TomTom.ov2	OV2 File	18 KB	No	41 KB	57%	5/11/2011 11:13 AM

Step 3: Plug your TomTom GPS device into your computer. To upload the .ov2 FSHP GPS Resource Itinerary database as a POI, copy the .ov2 resource file to the USA_and_Canada folder. To upload the .itn route file of the Florida Scenic Highways, navigate to the itn folder and copy the .itn database in the folder. Disconnect the The TomTom unit from the PC and the TomTom device automatically updates itself. Under “Itinerary Planning” (if available) one can load the Florida Scenic Highways.itn file and the user can choose which scenic highway they would like to choose to go to. The user has the ability under Itinerary Planning → Options, to show POIs nearby along the route.



ENJOY THE RIDE

Capture Florida!



www.floridascenichighways.com